

**Timber reveal**

**Subframe**

**Subsill+subhead**



**Fiberglass flyscreen**

**SS flyscreen**

**Chain winder**



**Single glass**

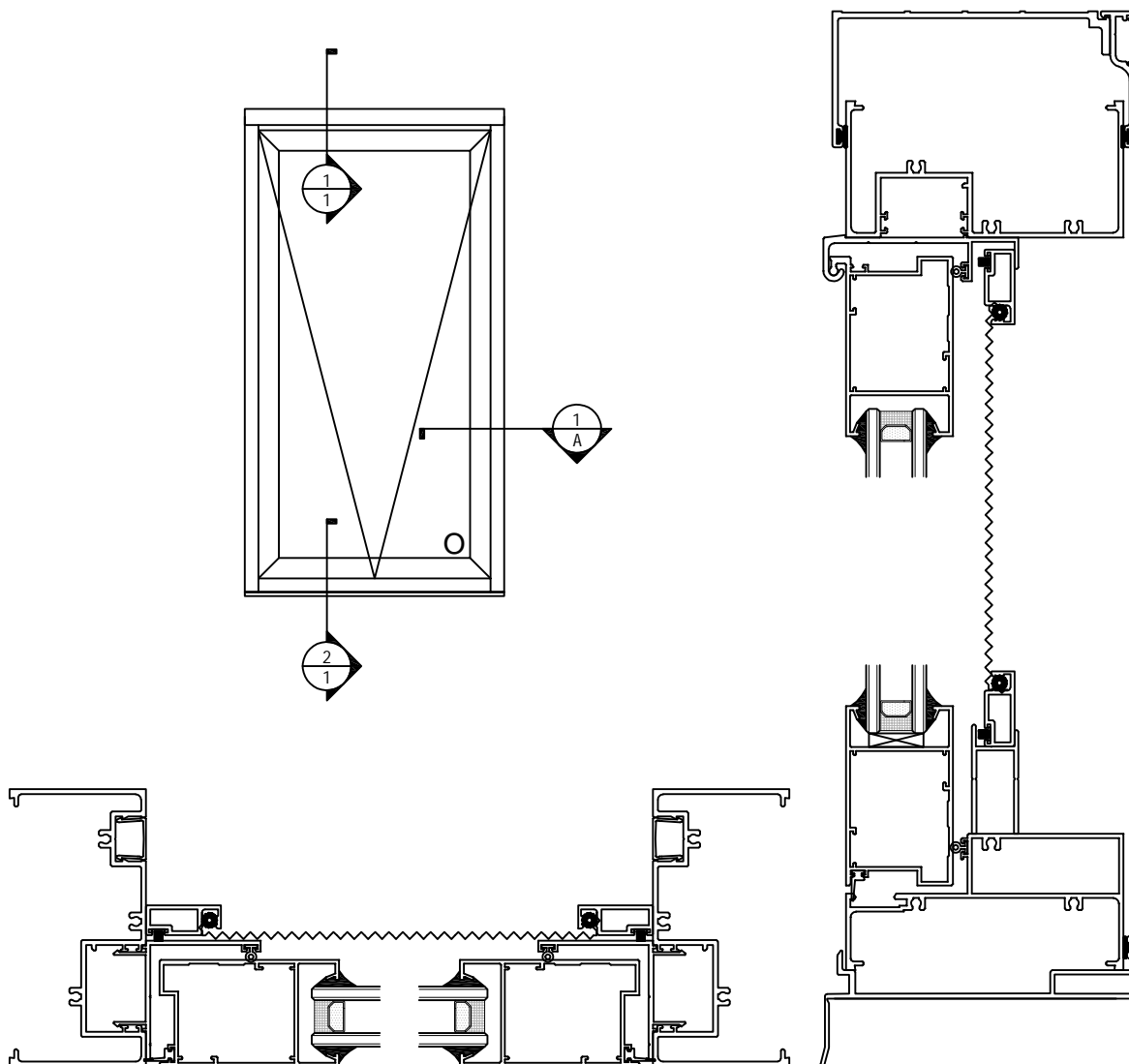
**Double glazed**

**Laminated glass**



# C101 Awning Window

## Product Brief Introduction



### COMPATIBLE WITH

- C101 Series Fix Window.
- T101 Series Sliding Door.
- H35 Series Hinged Door.
- H45 Series Hinged Door.

### Features & Benefits

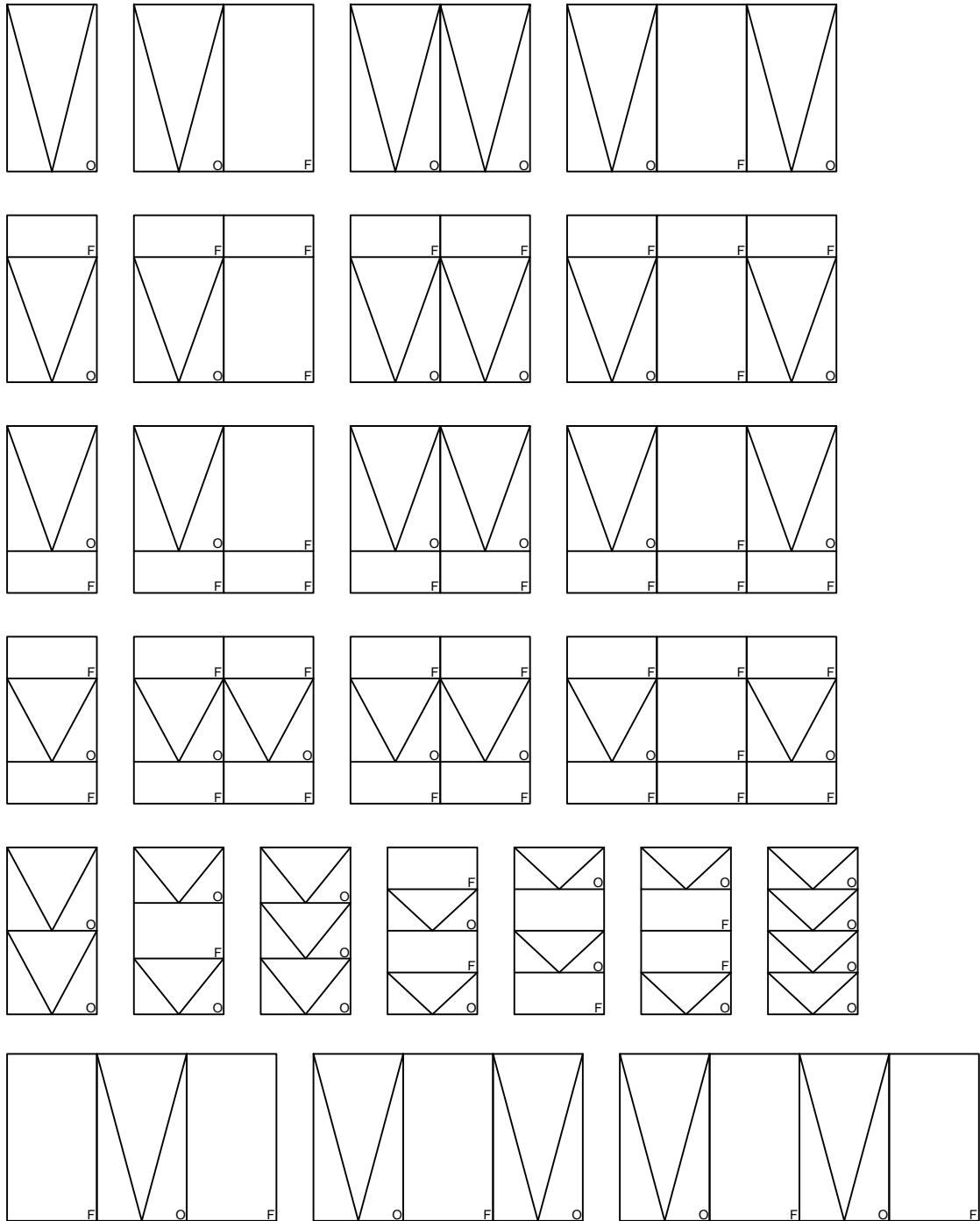
- 101.6mm X 50mm Frame.
- Architectural Applications.
- Supports Single Glazing.
- Compatible Door And Window.

### GLAZING DETAILS

- 10.78Lam
- 5Clr;5Obs
- 6Clr;6Obs
- 5Clr/12Ar/ 5Clr
- 5Obs /12Ar/ 5Clr
- 5Low-E/12Ar/ 5Clr
- 6Clr/12Ar/ 6Clr
- 6Obs /12Ar/ 6Clr
- 6Low-E/12Ar/ 6Clr

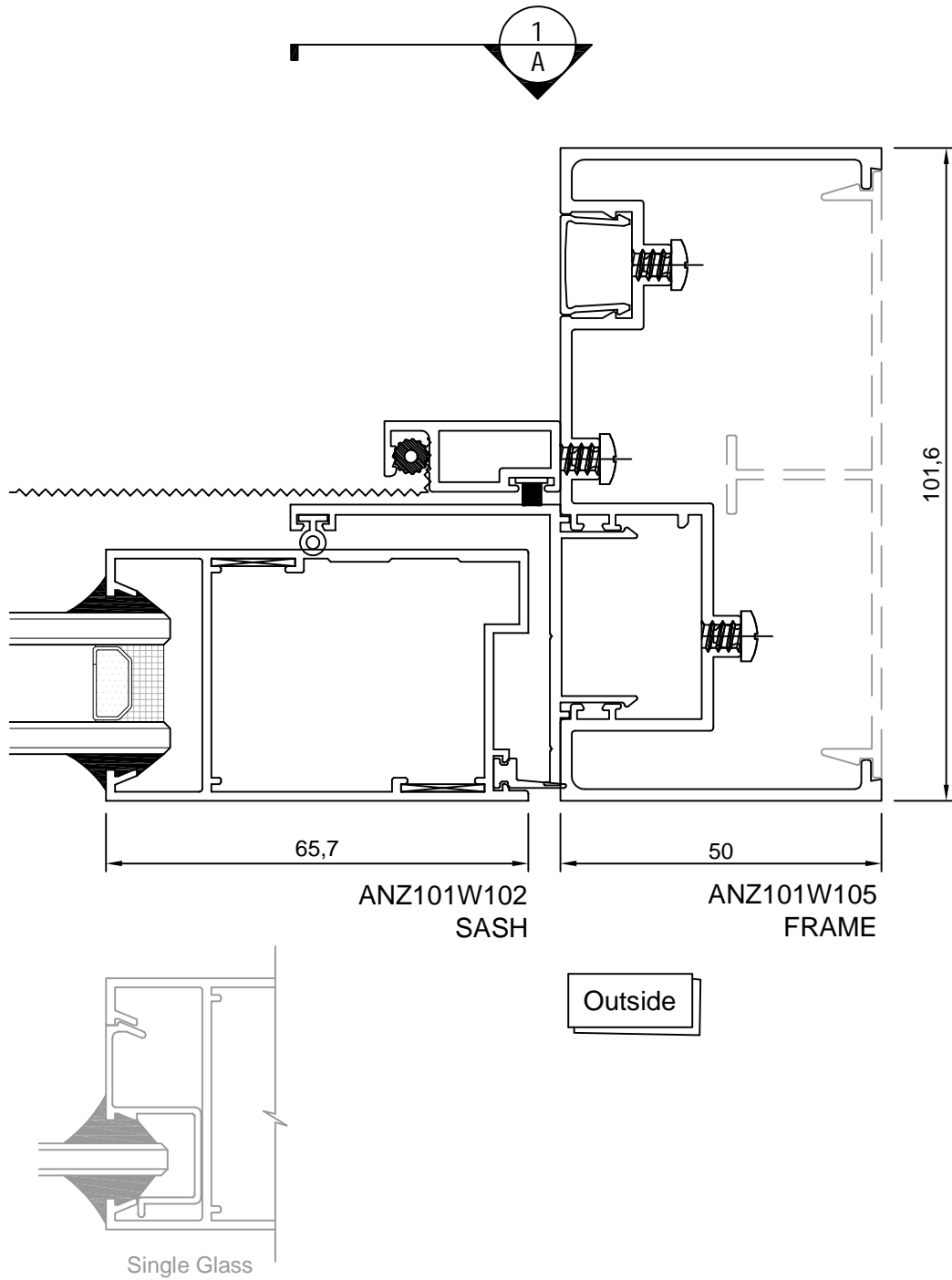
# C101 Awning Window

## Product form



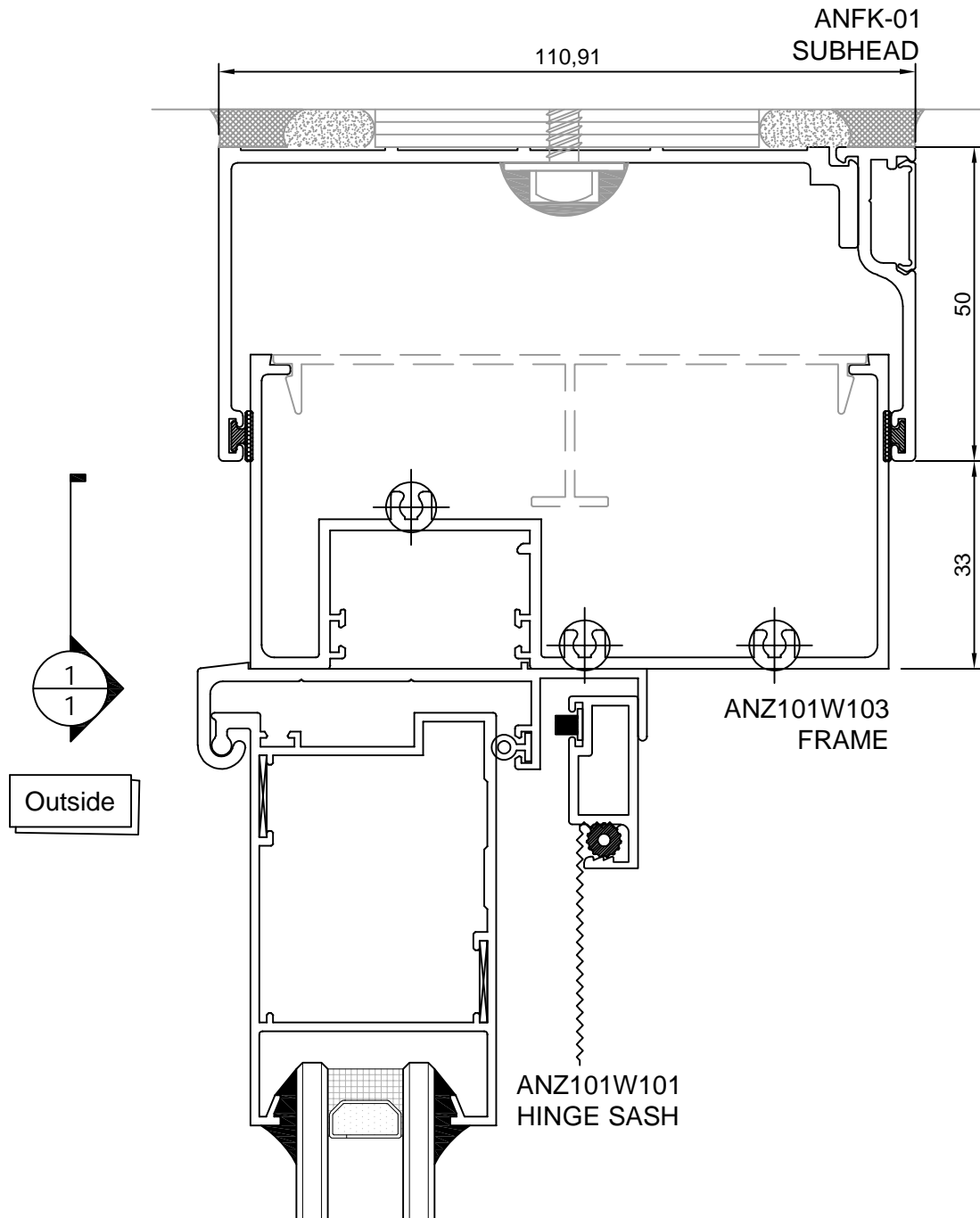
# C101 Awning Window

## Product Detail



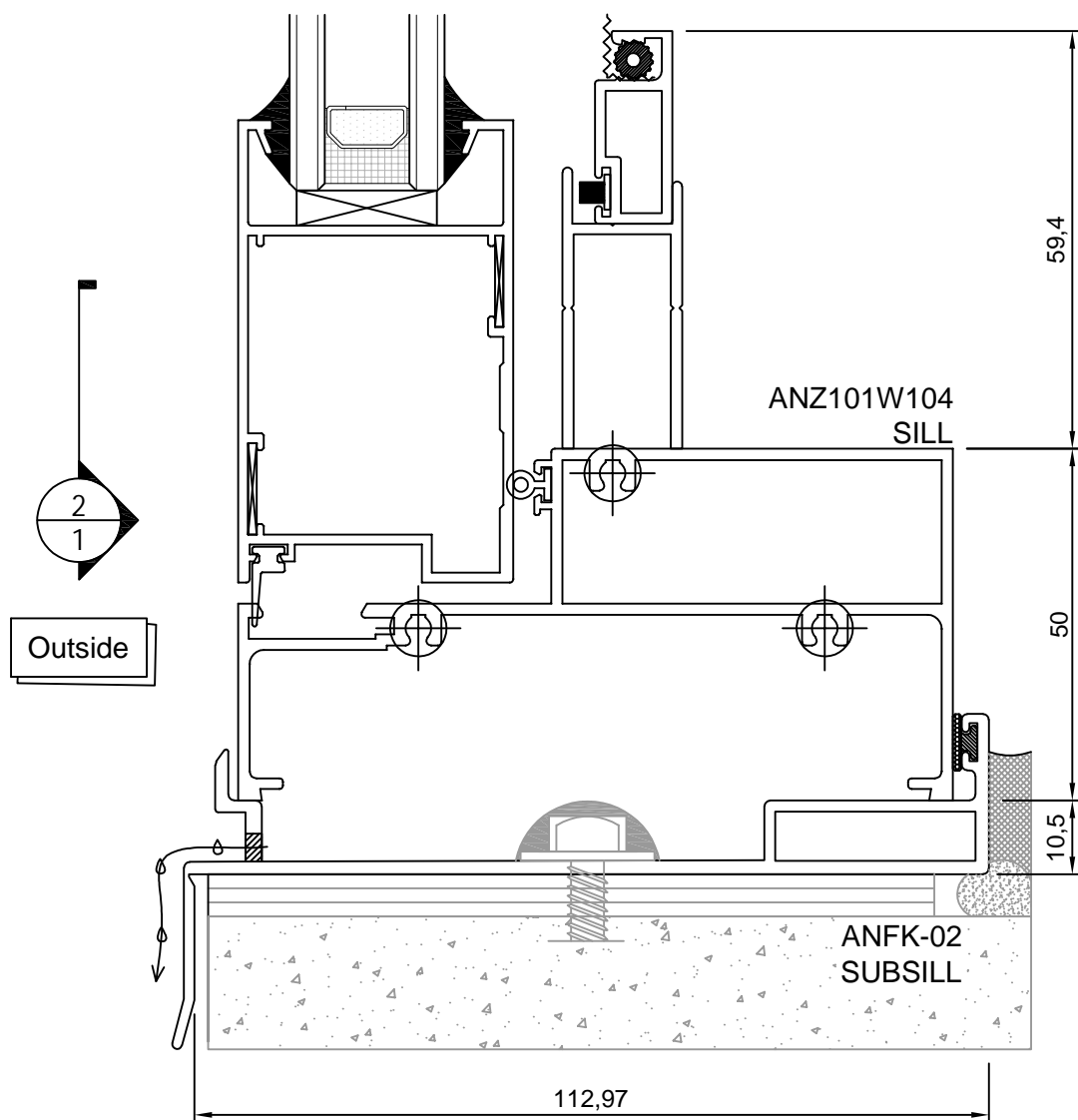
# C101 Awning Window

## Product Detail



# C101 Awning Window

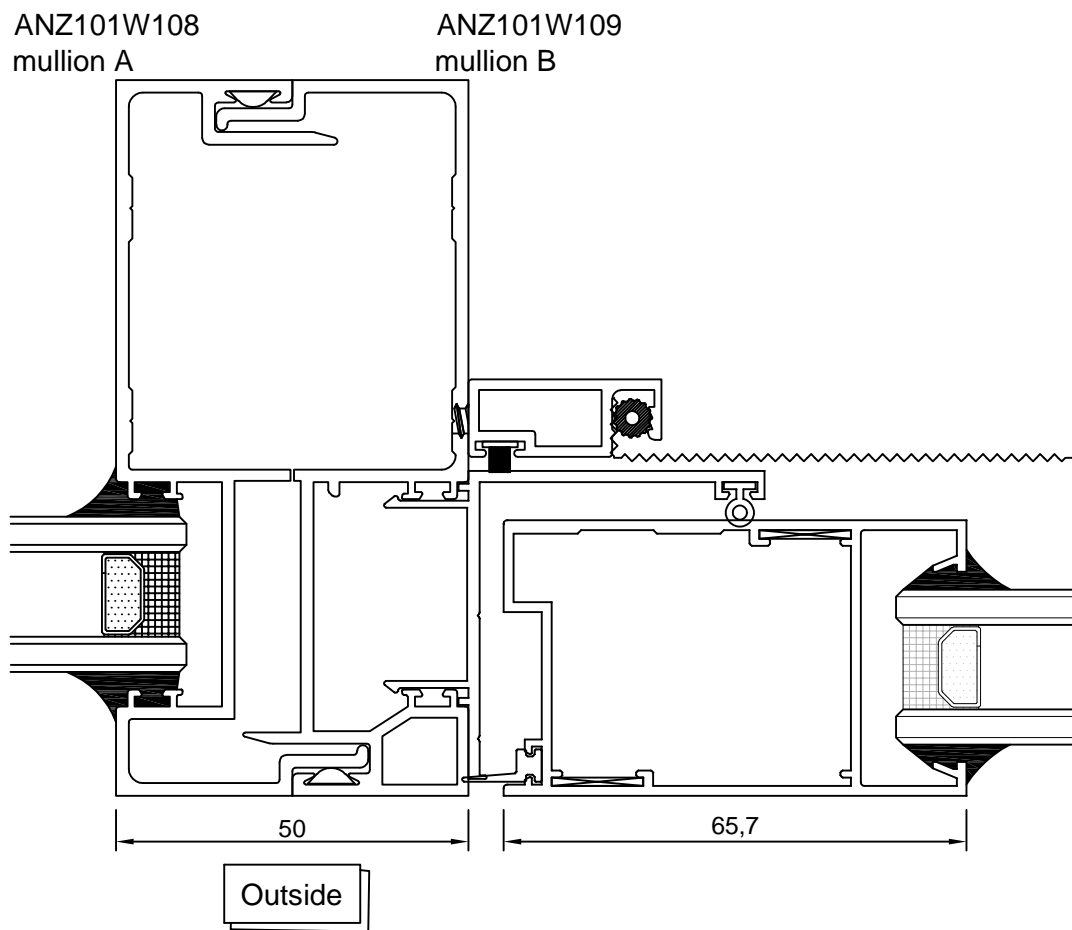
## Product Detail



# C101 Awning Window

## Product Detail

### Sash and fixed connection

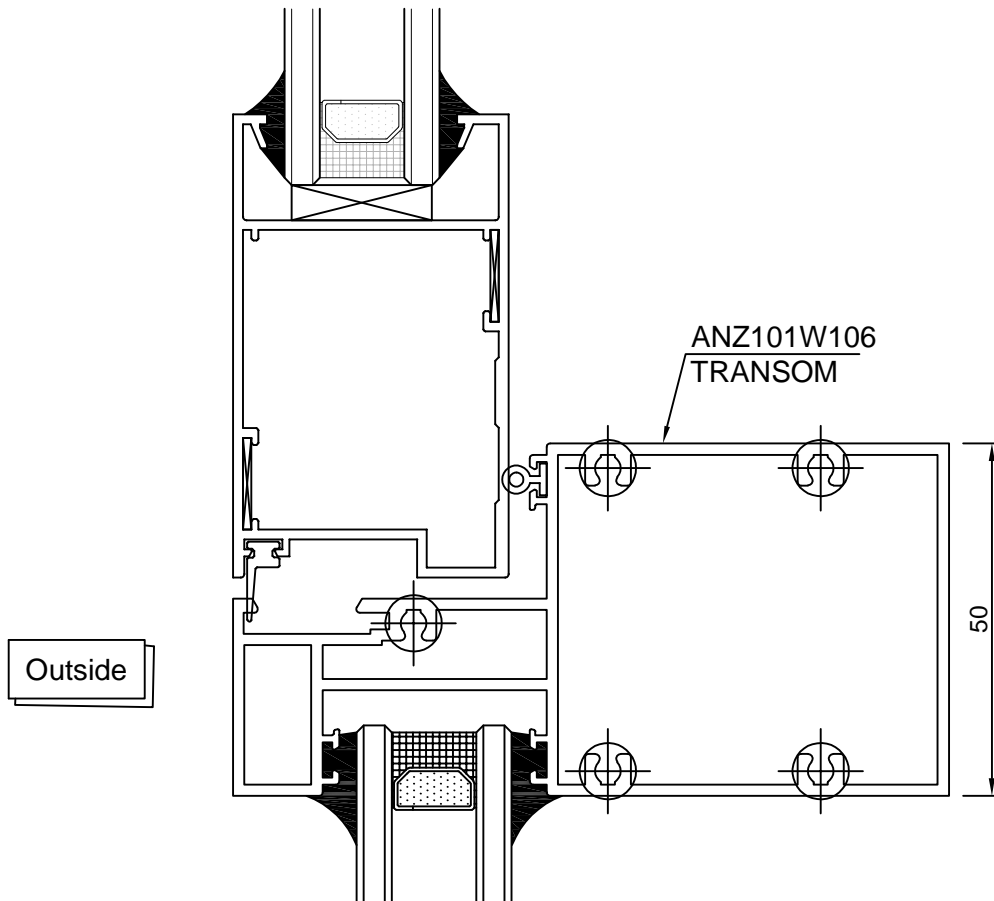




# C101 Awning Window

## Product Detail

### Sash and fixed connection



# C101 Awning Window

---

